

ProView™ XD – for SMA connectors

FIBER END FACE INTERFEROMETER & MICROSCOPE



The ProView XD is a highly advanced interferometer for precise measurement and inspection of fiber end faces with diameters from 220 to 1200 μm . The interferometer is specifically designed for production lines where a simple, fast and very accurate end face inspection is required. But the ProView XD is also well suited for R&D environments and for connector maintenance purposes.

In many cases an interferometric fringe pattern can be very complicated to analyze and understand. For ease of use and optimal inspection speed the ProView XD includes highly advanced and fully automatic functions for 2D and 3D topographic analyses of the end face surface. The software automatically indicates the radius and angle of the end face.

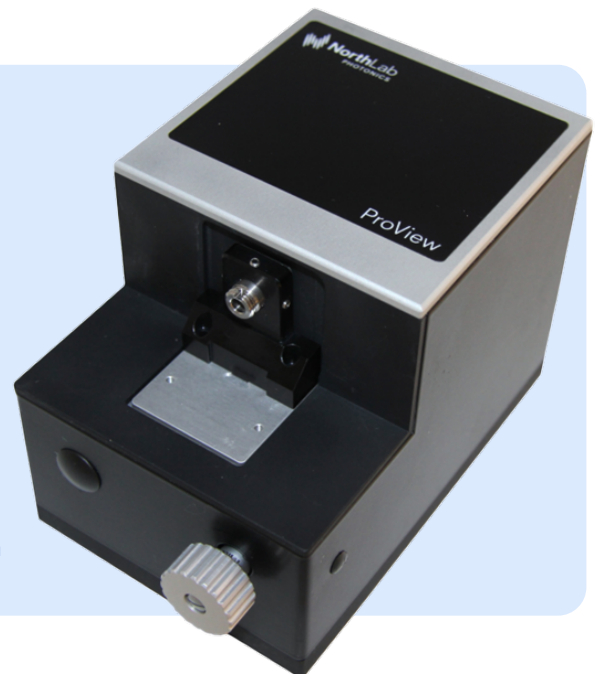
To simplify the inspection process even further the ProView XD can be set to a "PASS/FAIL" mode. This function allows the operator to simply determine the end face quality via color codes on the image. In addition to angle and radius inspection the ProView XD can also be used to measure several other properties such as fiber diameters and distance between defined points etc.

The ProView XD – for SMA connectors is delivered with a pre-mounted standard SMA connector holder. There are also optional holders available for inspection of other standard connectors (e.g. FC/PC, ST/PC and LD80) and a universal v-groove clamp assembly for inspection of bare fibers. Custom made holders or clamps can be offered on request.

The ProView XD has a compact design which makes it ideal for a production bench and to be used side-by-side with cleavers, polishing stations, ultrasonic cleaners and other preparation tools. The ProView XD is connected and powered via an USB 3.0 cable and hosted by an external PC (not included).

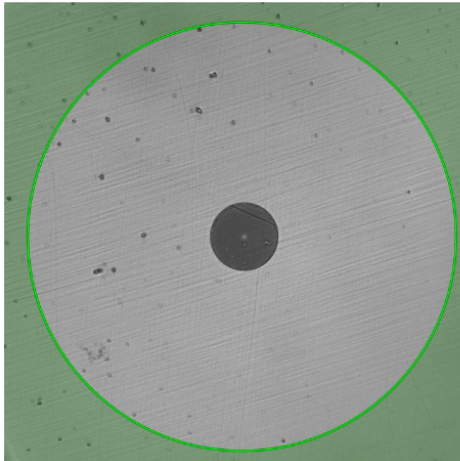
Key Features

- For end faces with diameters from 220 to 1200 μm
- 2D and 3D topography
- Fringe and inspection mode from PC Controller GUI
- Very fast inspection time with automatic angle estimation
- Optional use of PASS/FAIL radius and angle indication
- Inspection of end face properties such as flatness, perpendicularity, hackles and contamination
- Grab and save 2D and 3D images and connector data

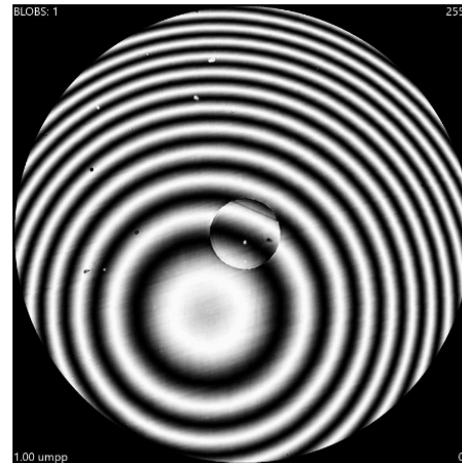


ProView™ XD – for SMA connectors

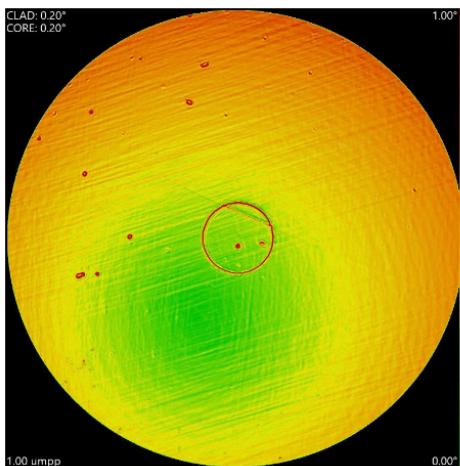
FIBER END FACE INTERFEROMETER & MICROSCOPE



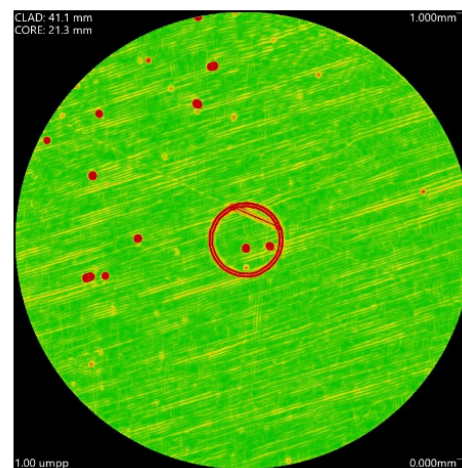
Microscope view



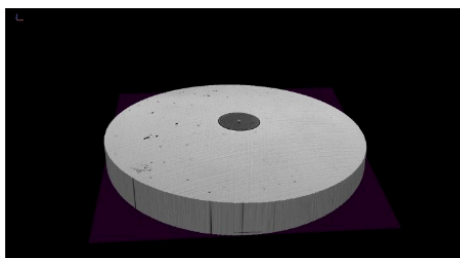
Interferometer view



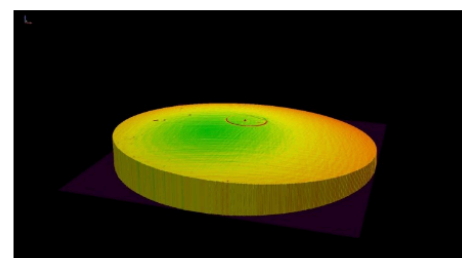
Angle map view



Curve map view



3D model view



3D model view

ProView™ XD – for SMA connectors

FIBER END FACE INTERFEROMETER & MICROSCOPE



Technical Specifications	
Dimensions:	86(W) x 127(D) x 93(H) mm 86(W) x 140(D) x 97(H) mm (incl. focus knob and rubber feet)
Weight:	1.2 kg
Power Source:	Through USB port
PC connection:	Super Speed USB (USB 3.0) Type-A with 2 m cable
Environment:	Operating temperature: 10 °C – 40 °C Storage temperature: -20 °C – 50 °C Humidity: 5% ~ 95% RH (non-condensing)
Fiber diameter:	220 µm – 1200 µm
Field of view:	~1300 µm
Resolution:	2560 x 1920 (4.92 MP)
Sensor:	CMOS (monochrome)
Image file format:	JPEG, PNG, TIFF, GIF

Technical Specifications	
Computer:	PC with Intel i5 (or better)
USB: ⁽²⁾	One free USB 3.0 port (Super Speed)
Memory:	4 GB RAM (16 GB RAM recommended)
Disc space:	100 MB (500 MB recommended)
Operating system:	Windows 8/8.1/10 64-bit (with .NET Framework 4.8 or later)
Graphics card:	3D graphics support (dedicated GPU recommended)
Display resolution:	1920 x 1080 (dual monitor system recommended)
Input devices:	Keyboard and a three-button scroll-wheel mouse (or equivalent)

⁽²⁾ Only use USB 3.0 ports directly connected to the motherboard of the PC (i.e. a port without an internal extension cable).

System Acquisition Range and Accuracy	
Height, peak to valley:	15 µm
Angle, 220 µm fiber:	up to 3.9°
Angle, 400 µm fiber:	up to 2.1°
Angle, 720 µm fiber:	up to 1.2°
Angle, 1200 µm fiber:	up to 0.7°
Absolute accuracy: ⁽¹⁾	0.03° standard deviation (<400 µm, ROI = 90%) 0.02° standard deviation (>400 µm, ROI = 90%)
Relative accuracy: ⁽¹⁾	5% up to 2°

(1) Using software calibration compensation.

Product	Part #	Qty
NorthLab ProView™ XD – for SMA connectors	IF-12-01001	
Standard Package		
USB 3.0 Cable	N/A	1
User's Manual & PC Software	N/A	1
Accessories and Spares		
Universal V-groove Clamp	IF-90-01004	
SMA Connector Holder	IF-90-01010	
FC/PC Connector Holder	IF-90-01011	
ST/PC Connector Holder	IF-90-01012	
LD80 Connector Holder	IF-90-01013	

Information is subject to change without notice. Last update: 2026-03-11.